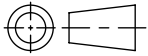
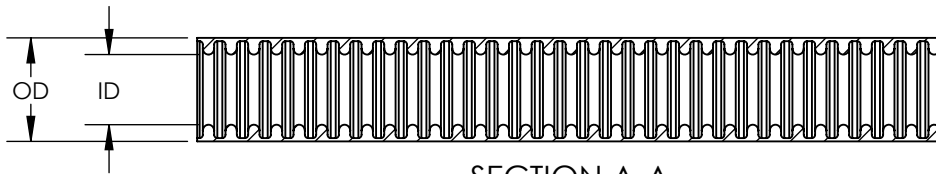
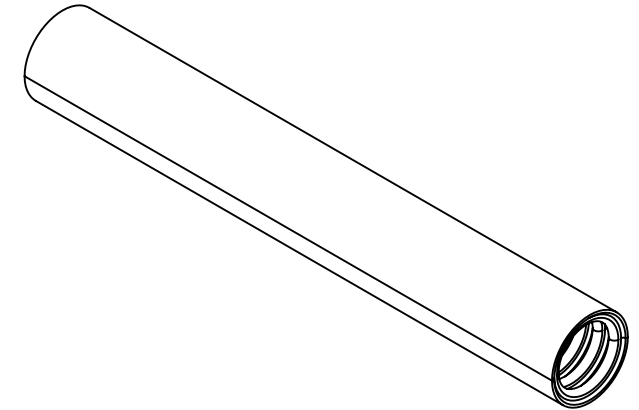
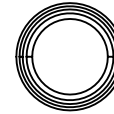
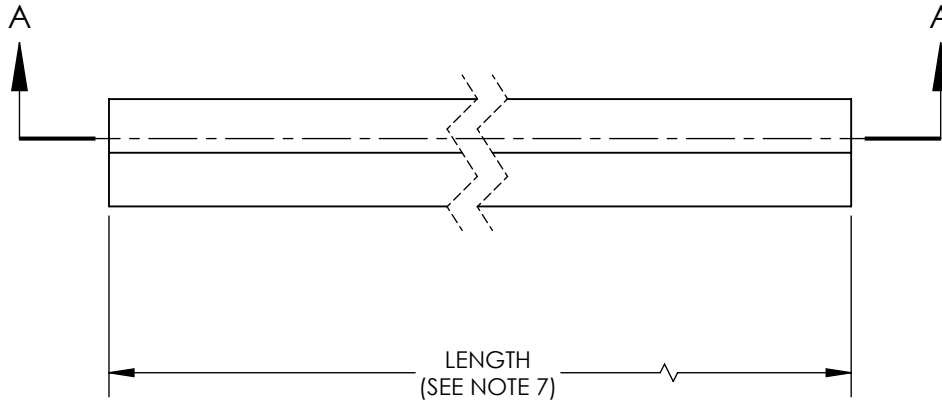


SW2014



Revision level			Revision Record	Changed	Date	Approved	Date
Drawing	State	Part					
00.0	Design Release		SEE ECN# 013638	GRW	11/30/2016	KAC	11/30/2016



SECTION A-A

- NOTES:
1. FLAMMABILITY SELF-EXTINGUISHING (EN613861)
  2. OPERATING TEMPERATURE -76° F TO +302° F (-60° C TO +150° C)
  3. RoHS
  4. HF
  5. USE WITH HELAGUARD LTP OR LTPUL SERIES METALLIC FITTINGS FOR IP66 + IP67 + IP68 + IP69 RATINGS
  6. MANUFACTURED TO UL360 REQUIREMENTS
  7. CONSULT FACTORY OR WEBSITE FOR AVAILABLE LENGTHS

Conduit Nominal Size		HellermannTyton Item Number	Man'f Part Reference	Outside Dimension (OD)		Inside Dimension (ID)		Minimum Bend Radius	
inches	mm			in	mm	in	mm	in	mm
1/4	10.0	LTPHC10B-25M	LTPHC10	0.46	11.8	0.28	7.0	1.38	35.0
5/16	12.0	LTPHC12B-25M	LTPHC20	0.56	14.2	0.39	10.0	1.57	40.0
3/8	16.0	LTPHC16B-25M	LTPHC16	0.70	17.8	0.50	12.6	1.77	45.0
1/2	20.0	LTPHC20B-25M	LTPHC20	0.83	21.1	0.63	16.0	2.56	65.0
3/4	25.0	LTPHC25B-25M	LTPHC25	1.04	26.4	0.83	21.0	3.94	100.0
1	32.0	LTPHC32B-25M	LTPHC32	1.30	33.1	1.04	26.5	5.31	135.0
1-1/4	40.0	LTPHC40B-10M	LTPHC40	1.65	41.8	1.39	35.4	6.89	175.0
1-1/2	50.0	LTPHC50B-10M	LTPHC50	1.89	47.9	1.59	40.4	9.05	230.0
2	63.0	LTPHC63B-10M	LTPHC63	2.35	59.7	2.03	51.6	11.02	280.0

<b>Material</b> GALVANIZED STEEL & THERMOPLASTIC RUBBER	Units: <b>inches</b> Dimension without tolerances details to: .xxxx = ±.0005 .xxx = ±.005 .xx = ±.01 .x = ±.03 None = ±.06 ∠ = ±0.5° Dimension Formatted in [mm]	The copyright of this drawing is reserved by HellermannTyton. It is issued on condition that it is not reproduced, copied, or disclosed to a third party, either wholly or in part, without the consent of HellermannTyton.	Drawn: GRW Date: 11/30/2016	Article/Type-No: LTPHC SERIES	Scale: Project Number PRP 16-1963 Format: AH Sheet: 1/1
	Approved: KAC Date: 11/30/2016		Title: <b>HELAGUARD FLEXIBLE METALLIC GALVANIZED STEEL CONDUIT, LIQUID-TIGHT JACKETED THERMOPLASTIC COVER</b>		
	<b>HellermannTyton</b> North America Email: corp@htamericas.com Web: www.hellermann.tyton.com		Drawing-No: PRODUCTION : Phase		
	<b>16-1963-001-CSU</b>				