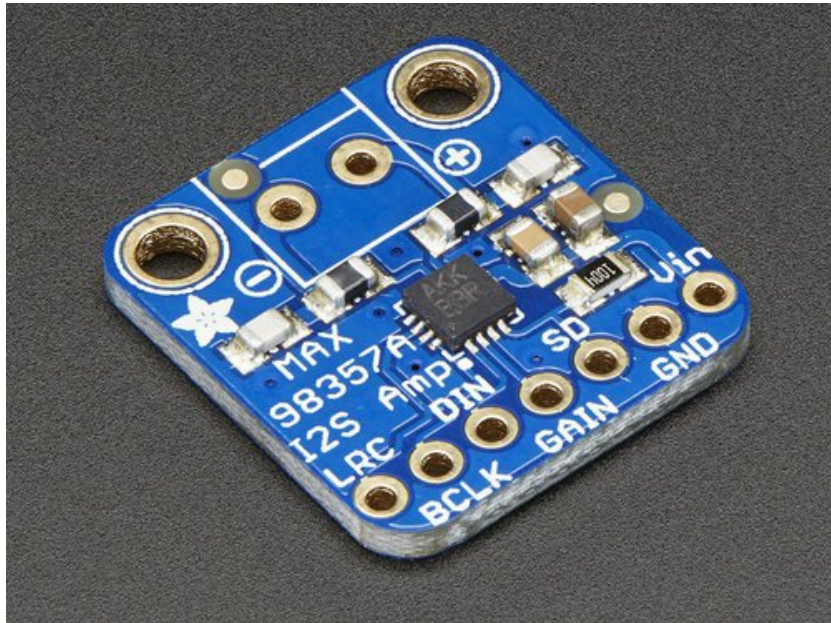


□

Adafruit MAX98357 I2S Class-D Mono Amp

Created by lady ada

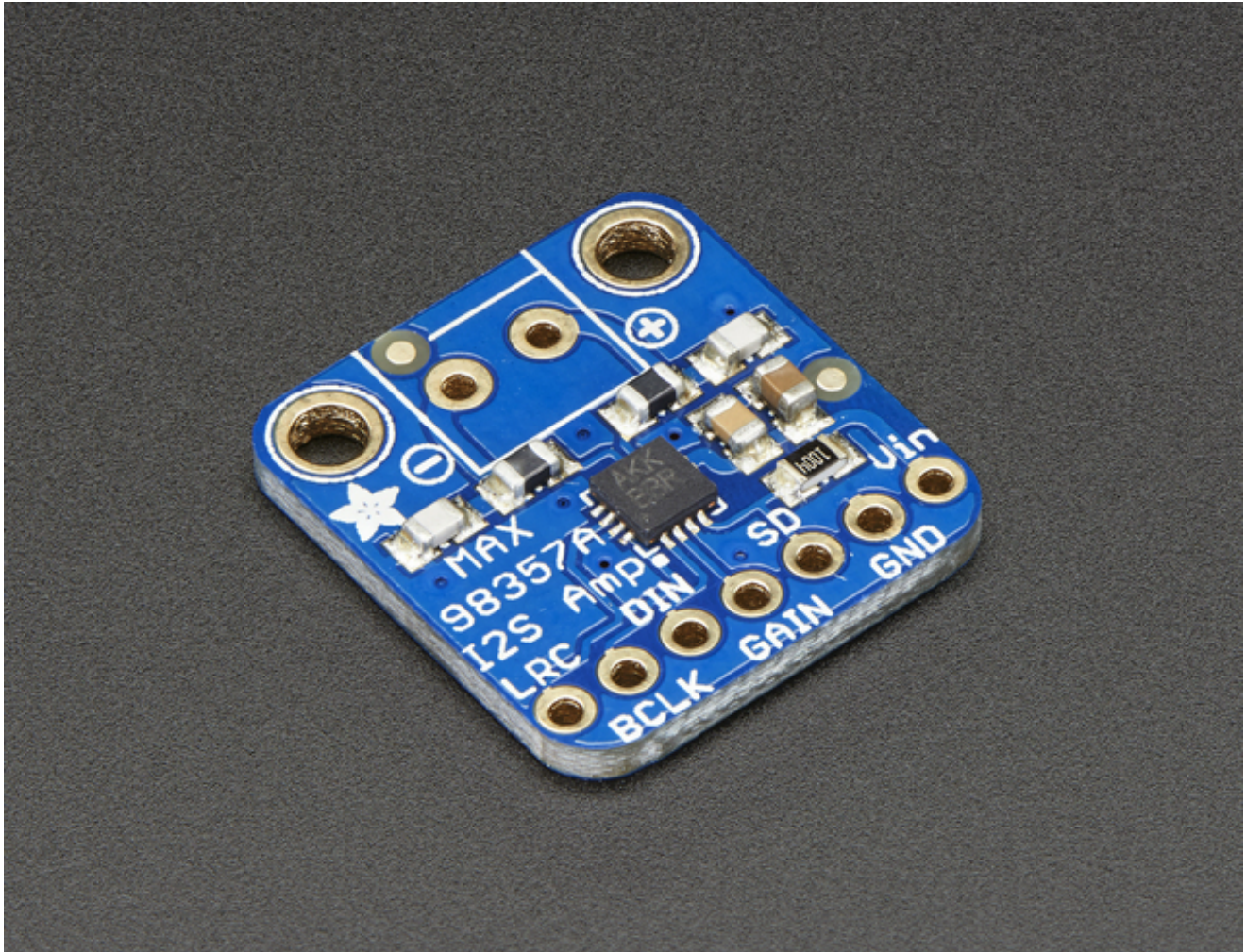


Last updated on 2017-03-09 09:52:08 PM UTC

Guide Contents

Guide Contents	2
Overview	3
Pinouts	7
Speaker Output	7
Power Pins	9
I2S Pins	9
Other Pins	10
Gain	11
SD / MODE	11
Assembly	13
Prepare the header strip:	13
Add the breakout board:	14
And Solder!	15
Raspberry Pi Wiring	18
Raspberry Pi Setup	20
Fast Install	20
Detailed Install	21
Update /etc/modprobe.d (if it exists)	21
Disable headphone audio (if it's set)	23
Create asound.conf file	24
Add Device Tree Overlay	25
Raspberry Pi Test	28
Speaker Tests!	28
Simple white noise speaker test	28
Simple WAV speaker test	28
Simple MP3 speaker test	28
Reducing popping	28
Downloads	30
Schematic	30
Fabrication Print	30

Overview



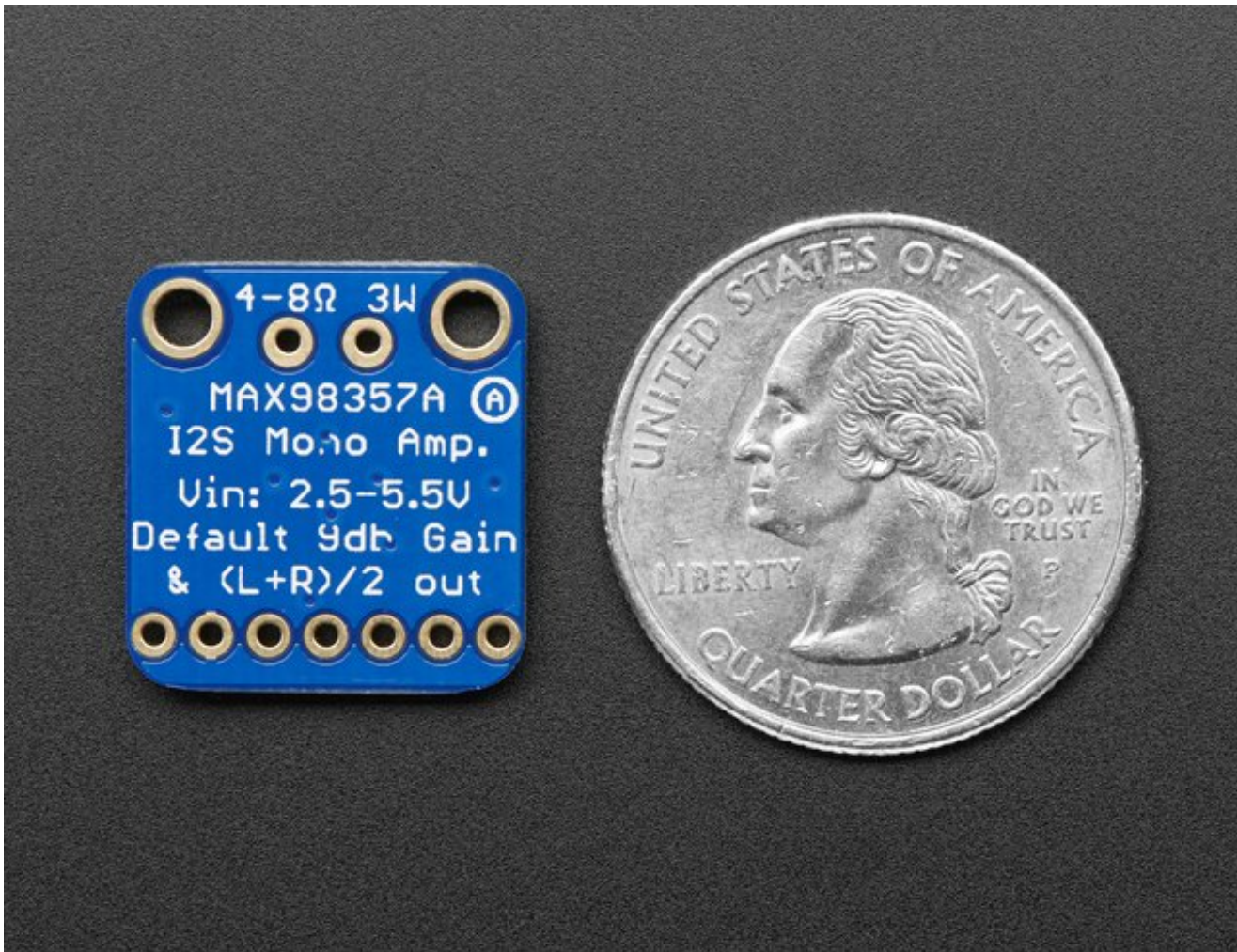
If your microcontroller or microcomputer has digital audio capability, this amp is for you! It takes standard I2S digital audio input and, not only decodes it into analog, but also amplifies it directly into a speaker. Perfect for adding compact amplified sound, it takes 2 breakouts (I2S DAC + Amp) and combines them into one.

I2S (not to be confused with I2C) is a digital sound protocol that is used on circuit boards to pass audio data around. Many high end chips and processors manage all of the audio in digital I2S format. Then, to input or output data, three or four pins are used (data in, data out, bit clock and left-right channel select). Usually, for audio devices, there's a DAC chip that will take I2S in and convert it to analog that can drive a headphone.

This small mono amplifier is surprisingly powerful - able to deliver 3.2 Watts of power into a 4 ohm impedance speaker (5V power @ 10% THD). Inside the miniature chip is a class D

controller, able to run from 2.7V-5.5VDC. Since the amp is a class D, it's incredibly efficient - making it perfect for portable and battery-powered projects. It has built in thermal and over-current protection but we could barely tell it got hot.

The audio input is I2S standard, you can use 3.3V or 5V logic data. The outputs are "Bridge Tied" - that means they connect directly to the outputs, no connection to ground. The output is a ~300KHz square wave PWM that is then 'averaged out' by the speaker coil - the high frequencies are not heard. All the above means that you can't connect the output into another amplifier, it should drive the speakers directly.



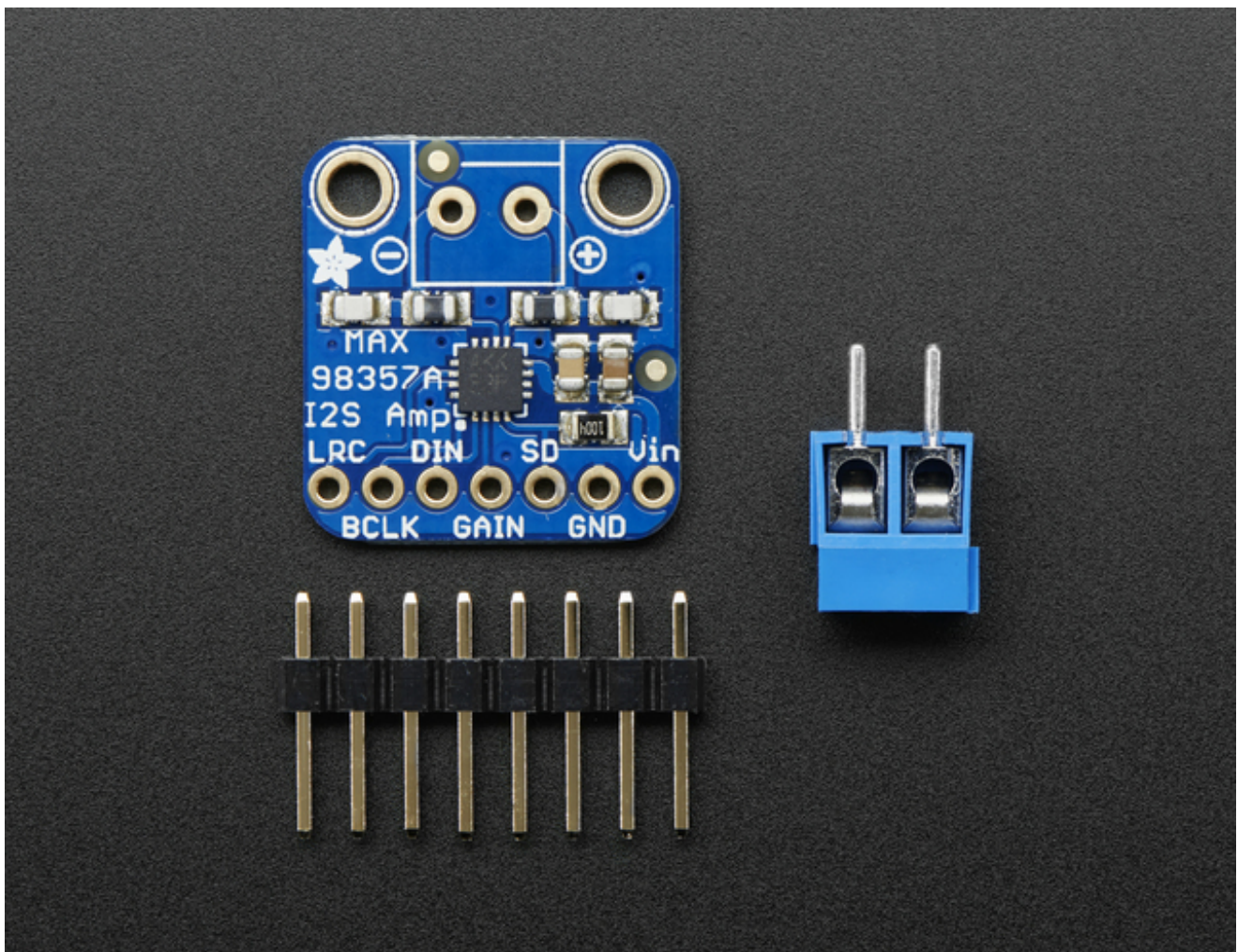
There's a Gain pin that can be manipulated to change the gain. By default, the amp will give you **9dB** of gain. By connecting a pullup or pull down resistor, or wiring directly, the Gain pin can be set up to give 3dB, 6dB, 9dB, 12dB or 15dB.

the ShutDown/Mode pin can be used to put the chip in shutdown or set up which I2S audio channel is piped to the speaker. By default, the amp will output (L+R)/2 stereo mix into mono out. By adding a resistor, you can change it to be just left or just right output

Works great with Raspberry Pi, Arduino Zero, and any other microcontroller or microcomputer with I2S audio outputs

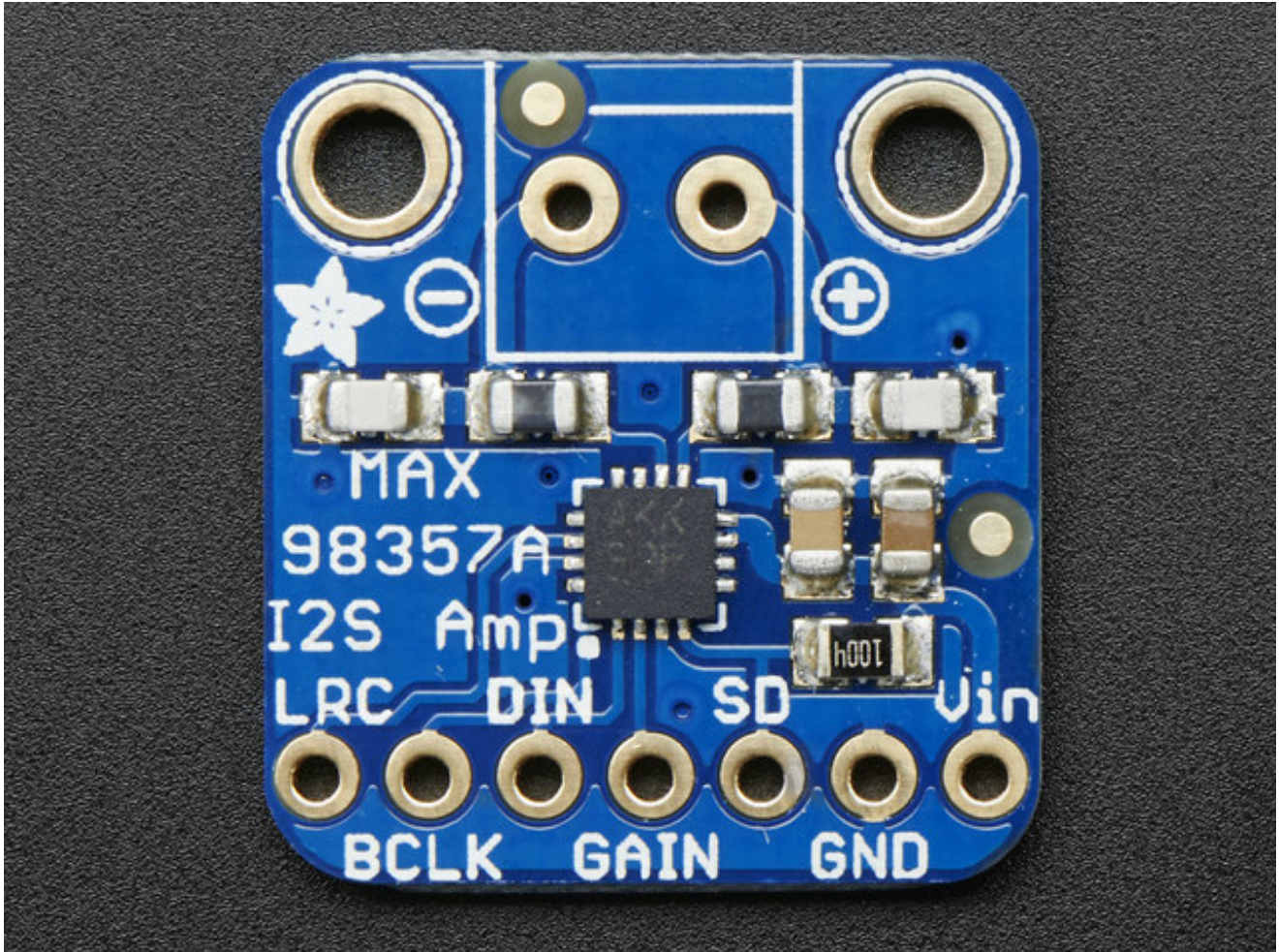
Specs:

- Output Power: 3.2W at 4Ω, 10% THD, 1.8W at 8Ω, 10% THD, with 5V supply
- PSRR: 77 dB typ @ 1KHz
- I2S sample rates from 8kHz to 96kHz
- No MCLK required
- Click + Pop reduction
- Five pin-selectable gains: 3dB, 6dB, 9dB, 12dB, 15dB
- Excellent click-and-pop suppression
- Thermal shutdown protection



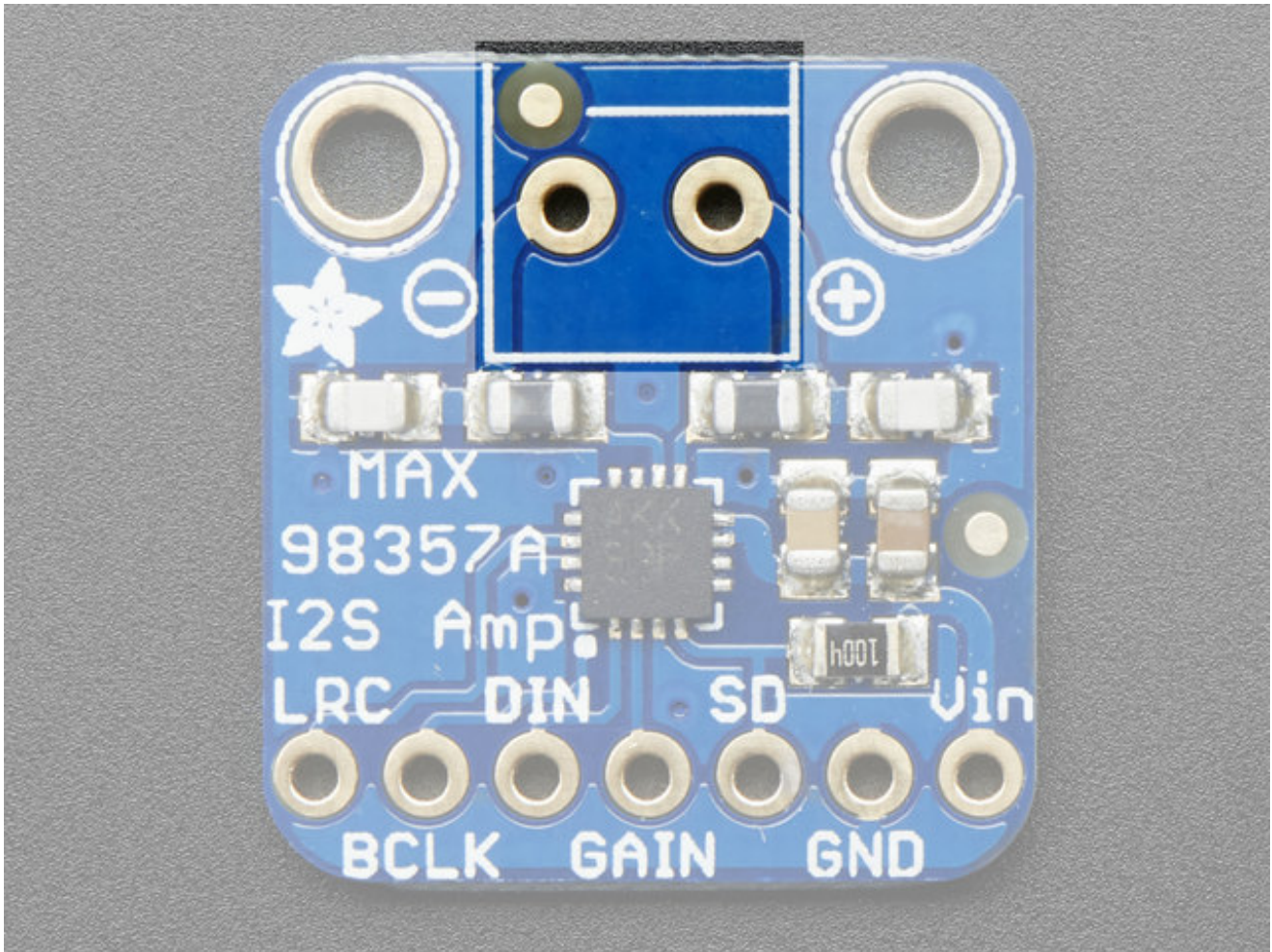
Comes as an assembled and tested breakout board, with a small piece of optional header and 3.5mm terminal block. Some soldering is required to attach the header and terminal block if those are desired.

Pinouts



The MAX98357A is an **I2S** amplifier - it does not use analog inputs, it only has digital audio input support! Don't confuse I2S with I2C, I2S is a sound protocol whereas I2C is for small amounts of data.

Speaker Output



This amplifier is designed to drive moving coil loudspeakers only. Speaker impedance must be 4Ω or more. The output signal is a 330KHz PWM square wave with a duty cycle proportional to the audio signal. The inductance of the speaker coil serves as a low-pass filter to average out the high-frequency components. Do not try to use this as a pre-amplifier.

The outputs of *each channel* are "Bridge-Tied" with no connection to ground. This means that for each channels, the + and - alternate polarity to create a single channel amplifier with twice the available power.

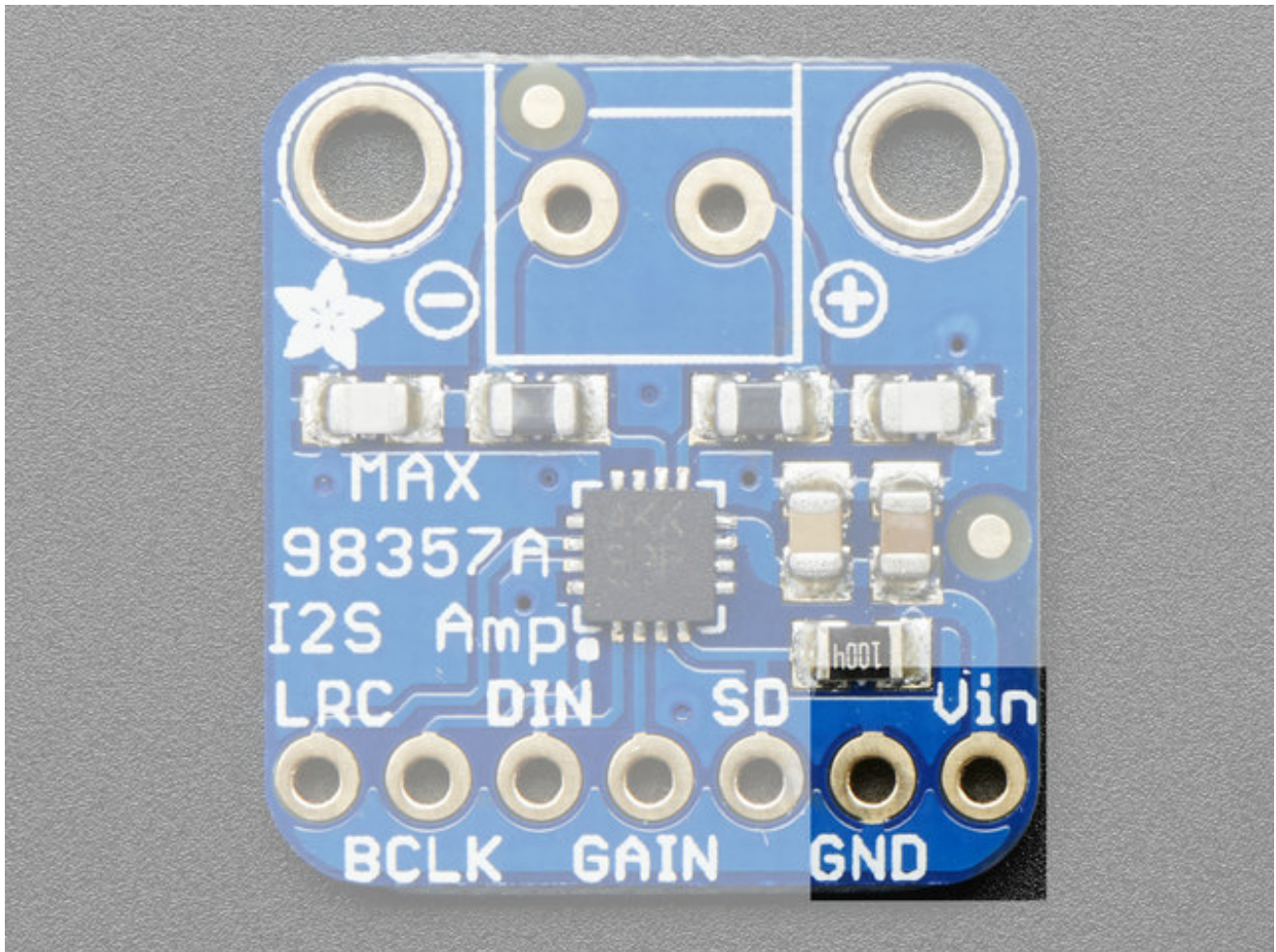
Connect your speakers using the 3.5mm screw-terminal blocks.

- 5V into 4Ω @ 10% THD - 3W max
- 5V into 4Ω @ 1% THD - 2.5W max
- 3.3V into 4Ω @ 10% THD - 1.3W max
- 3.3V into 4Ω @ 1% THD - 1.0W max

- 5V into 8Ω @ 10% THD - 1.8W max

- 5V into 8Ω @ 1% THD - 1.4W max
- 3.3V into 8Ω @ 10% THD - 0.8W max
- 3.3V into 8Ω @ 1% THD - 0.6W max

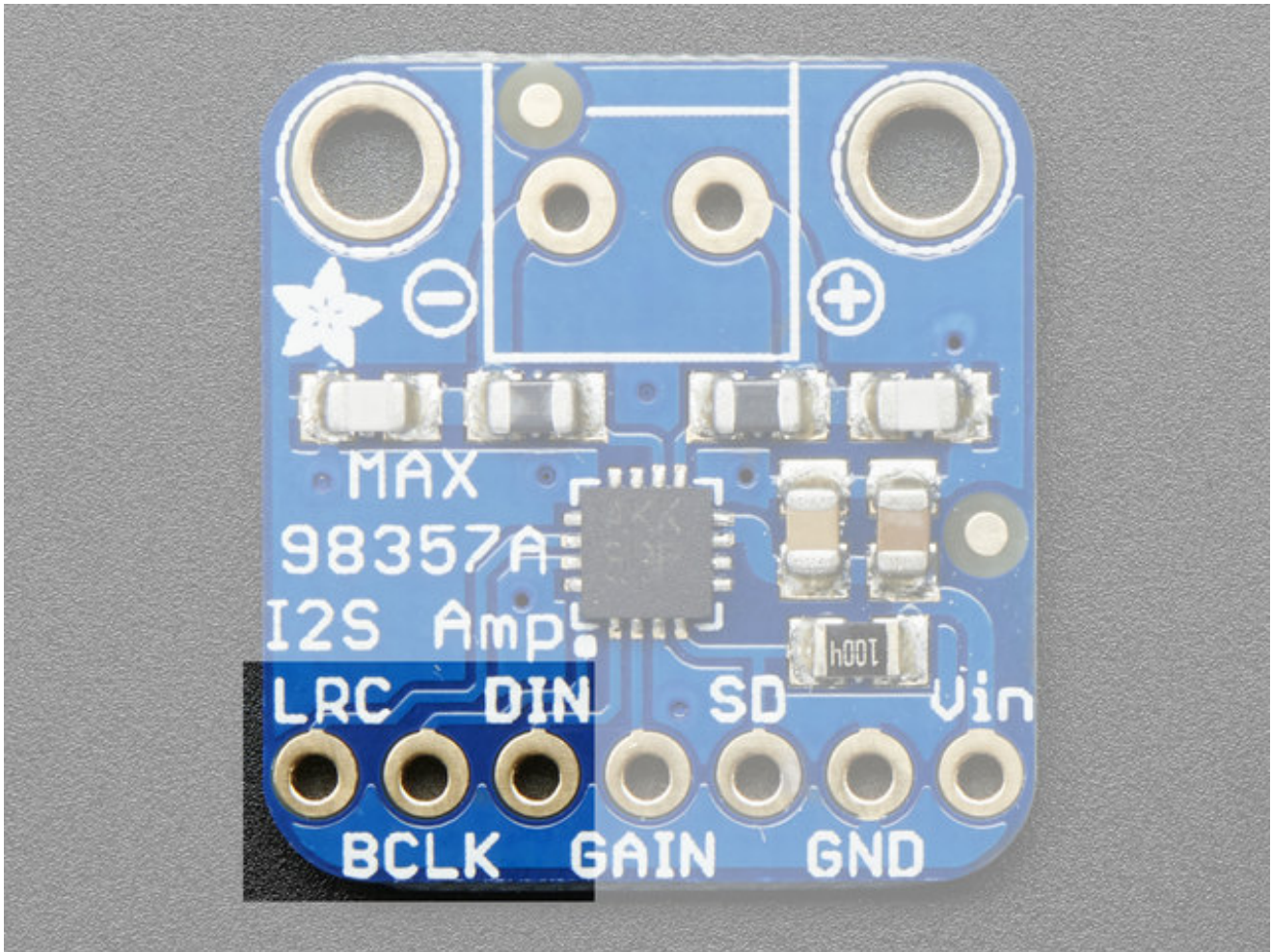
Power Pins



This is the power for the amplifier and logic of the amplifier. You can provide 2.5V up to 5.5V. Note that at 5V you can end up putting up to 2.8W into your speaker, so make sure your power supply can easily handle up to 650mA and we recommend a power supply spec'd for at least 800mA to give yourself some 'room'

If you have a 3.3V logic device, you can still power the amp from 5V, and that's recommended to get the most power output!

I2S Pins

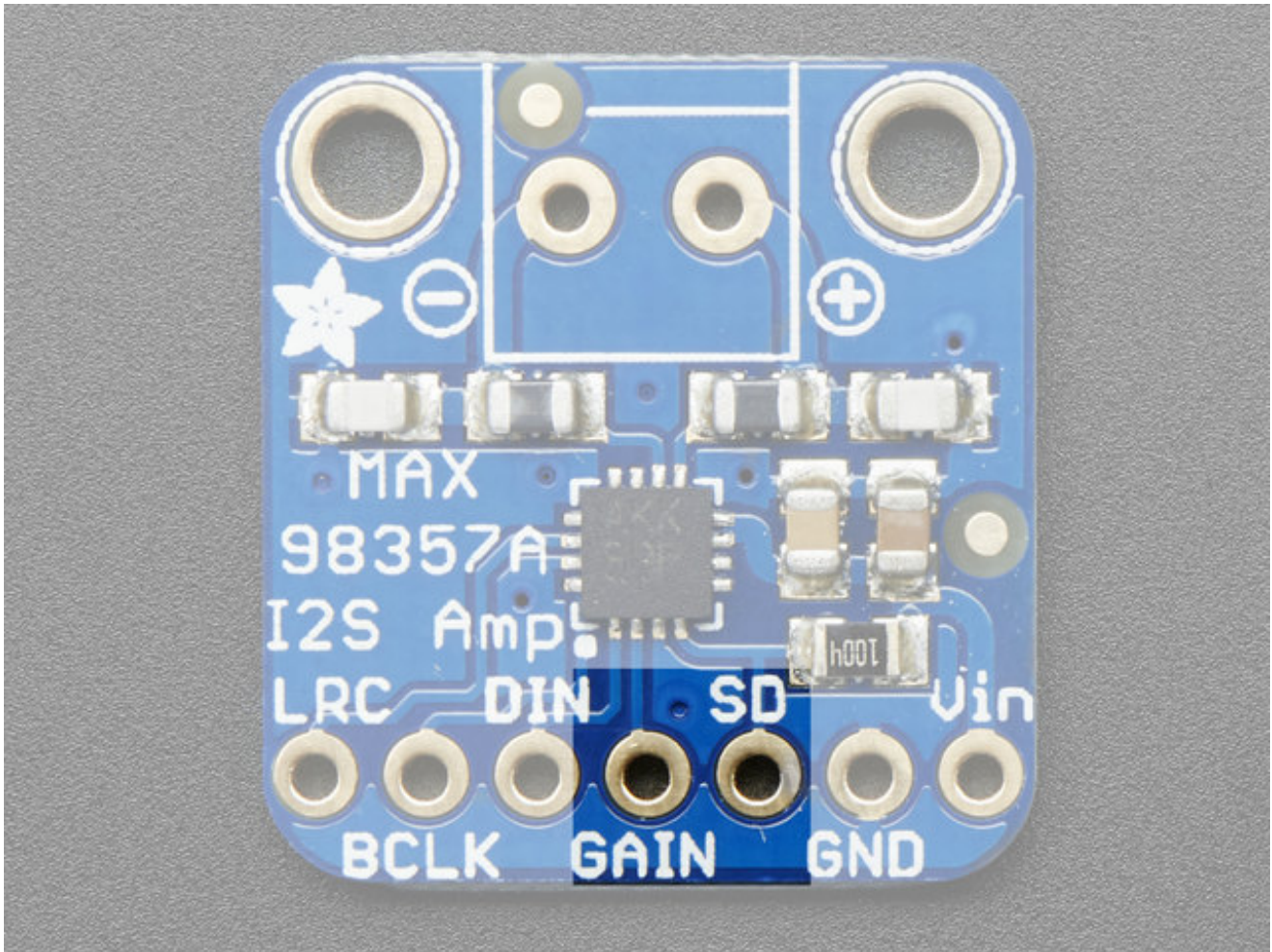


Three pins are used to receive audio data. These can be 3.3-5V logic

- **LRC** (Left/Right Clock) - this is the pin that tells the amplifier when the data is for the left channel and when its for the right channel
- **BCLK** (Bit Clock) - This is the pin that tells the amplifier when to read data on the data pin.
- **DIN** (Data In) - This is the pin that has the actual data coming in, both left and right data are sent on this pin, the LRC pin indicates when left or right is being transmitted

Note that this amplifier does not require an **MCLK** pin, if you have an MCLK output, you can leave it disconnected!

Other Pins



The other settings are handled by **GAIN** and **SD**

Gain

GAIN is, well, the gain setting. You can have a gain of **3dB**, **6dB**, **9dB**, **12dB** or **15dB**.

- **15dB** if a 100K resistor is connected between **GAIN** and **GND**
- **12dB** if **GAIN** is connected directly to **GND**
- **9dB** if **GAIN** is not connected to anything (this is the default)
- **6dB** if **GAIN** is connected directly to **Vin**
- **3dB** if a 100K resistor is connected between **GAIN** and **Vin**

This way, the default gain is 9dB but you can easily change it by tweaking the connection to the **GAIN** pin. Note you may need to perform a power reset to adjust the gain.

SD / MODE

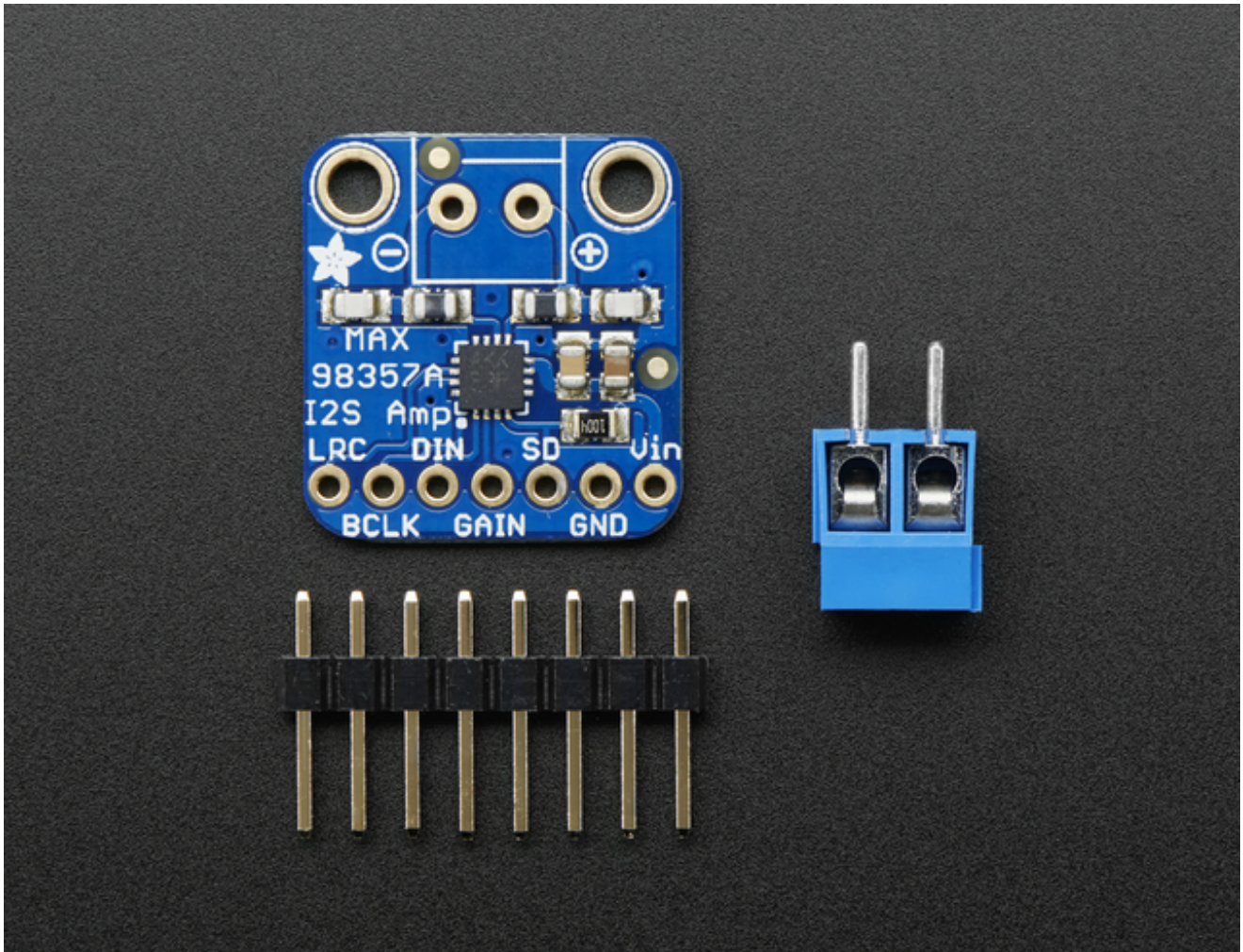
This pin is used for shutdown mode but is *also* used for setting which channel is output. It's a little confusing but essentially:

- If **SD** is connected to ground directly (voltage is under 0.16V) then the amp is **shut down**
- If the voltage on **SD** is between 0.16V and 0.77V then the output is (Left + Right)/2, that is the stereo average.
- If the voltage on **SD** is between 0.77V and 1.4V then the output is just the Right channel
- If the voltage on **SD** is higher than 1.4V then the output is the Left channel.

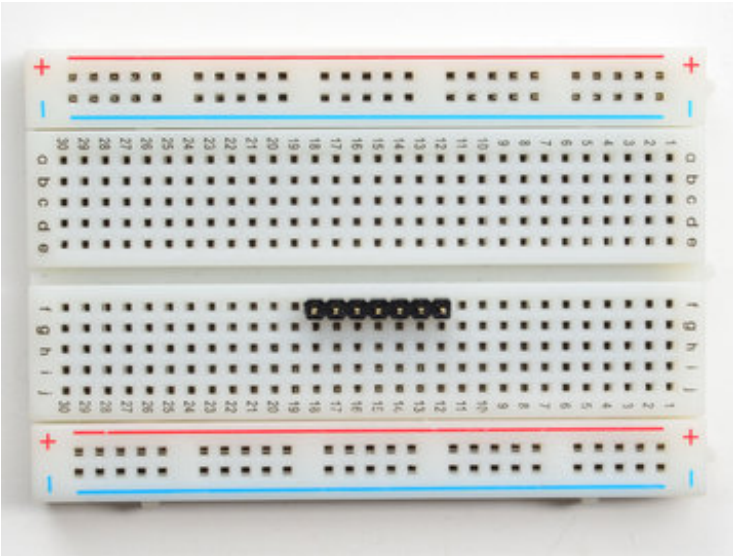
This is compounded by an *internal* 100K pulldown resistor on **SD** so you need to use a pullup resistor on SD to balance out the 100K internal pulldown.

For the breakout board, there's a 1Mohm resistor from **SD** to **Vin** which, when powering from 5V will give you the 'stereo average' output. If you want left or right channel only, or if you are powering from non-5V power, you may need to experiment with different resistors to get the desired voltage on **SD**

Assembly

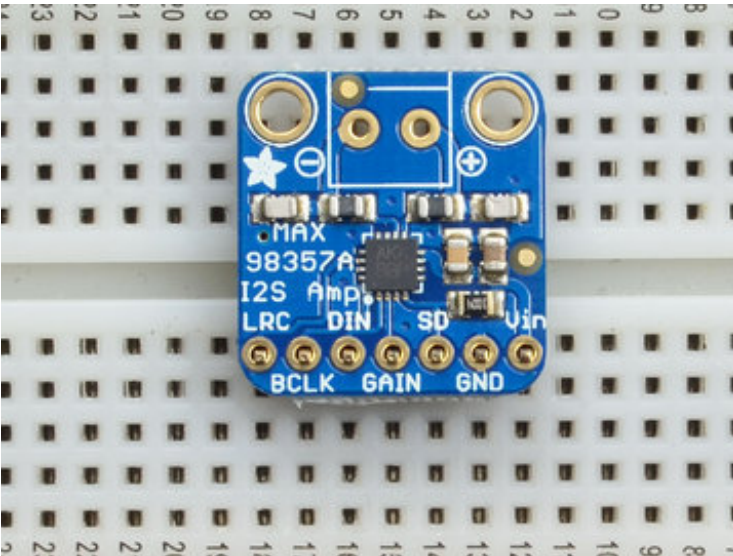


Prepare the header strip:



Cut the strip to length if necessary. It will be easier to solder if you insert it into a breadboard - **long pins down**

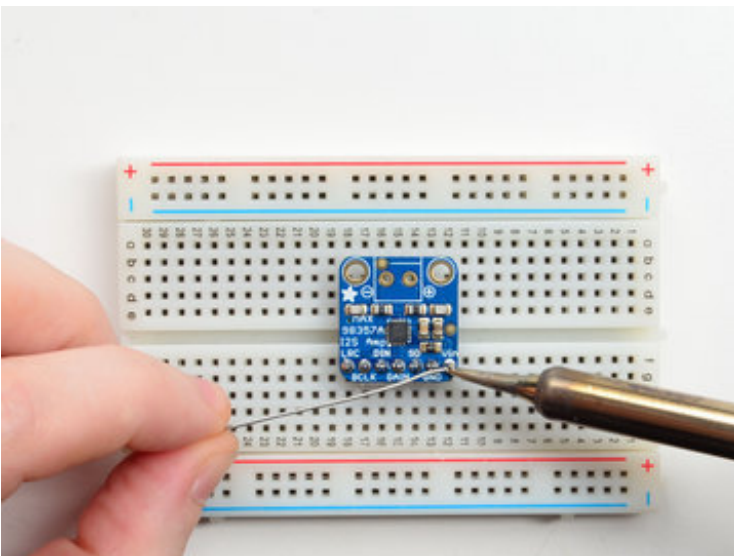
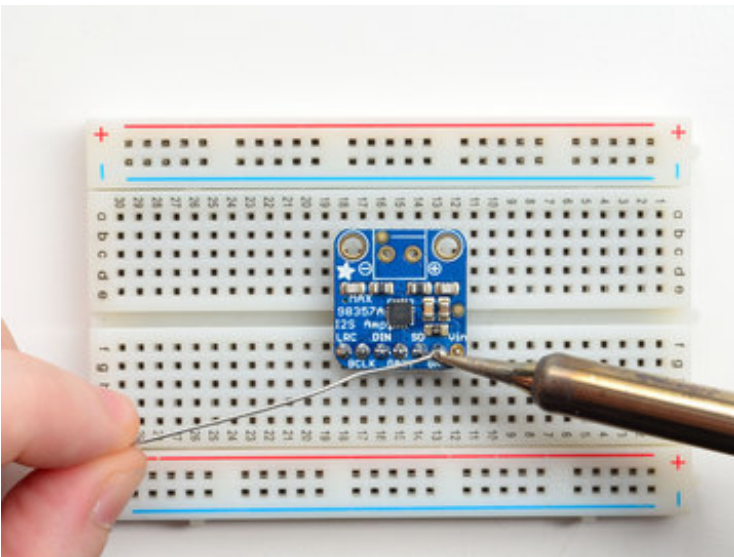
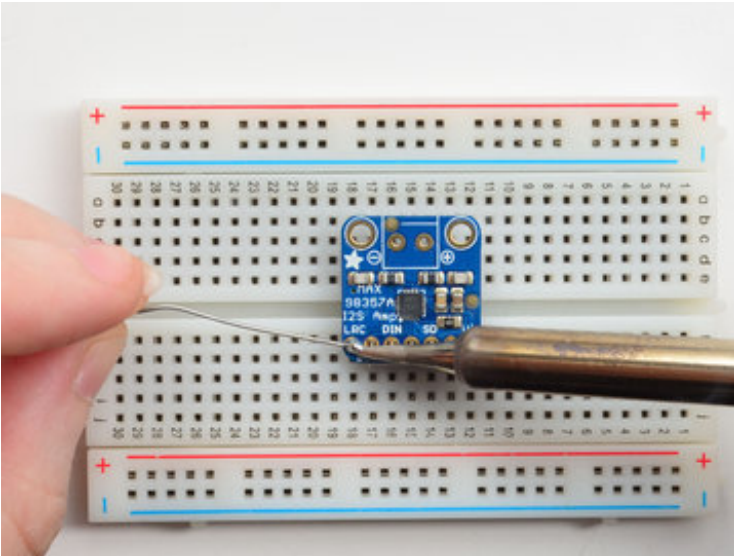
•



Add the breakout board:

Place the breakout board over the pins so that the short pins poke through the breakout pads

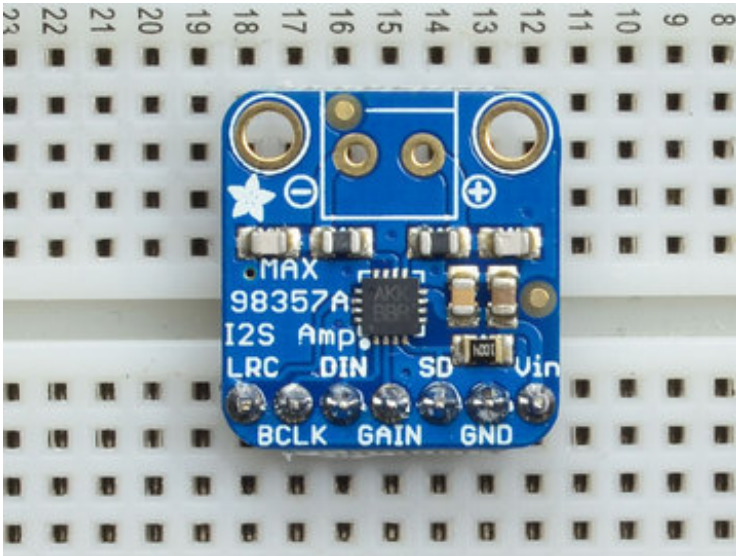
•



And Solder!

Be sure to solder all pins for reliable electrical contact.

(For tips on soldering, be sure to check out our [Guide to Excellent Soldering](http://adafruit.com/guides/excellent-soldering) (<http://adafruit.it/aTk>)).



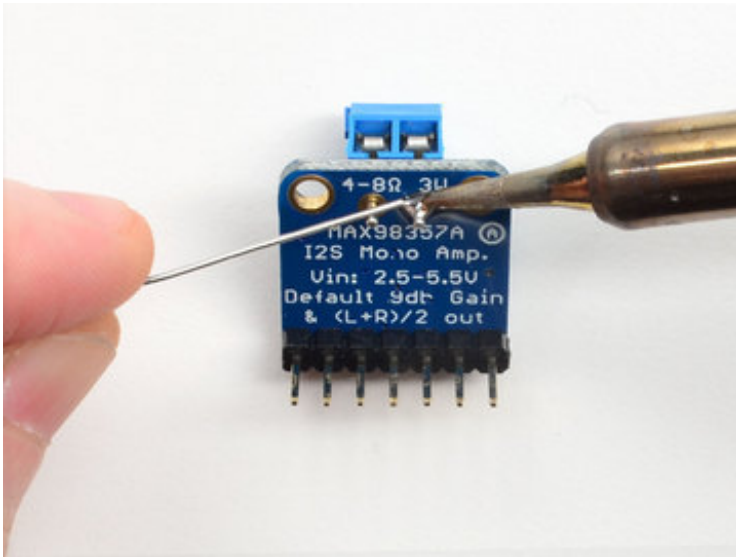
You're done! Check your solder joints visually and continue onto the next steps

-



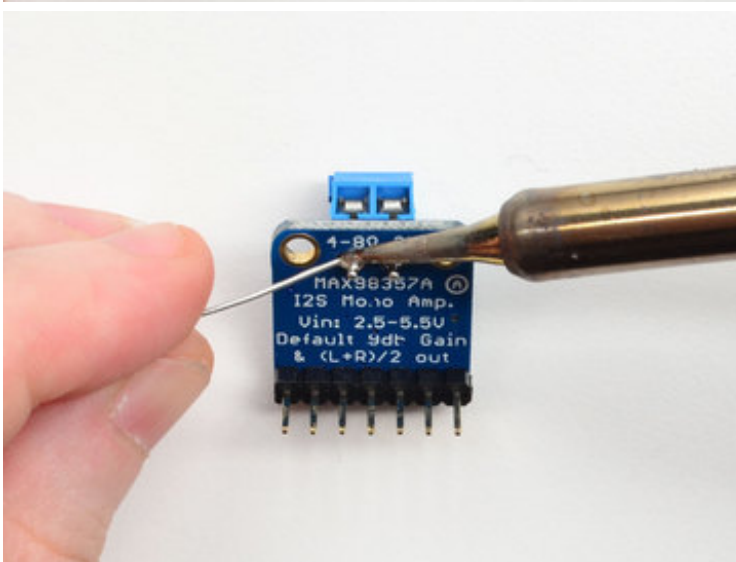
If you want to use a terminal block for connecting a speaker, place the 3.5mm terminal so the mouths point out.

-



-

Solder in both pins with plenty of solder!

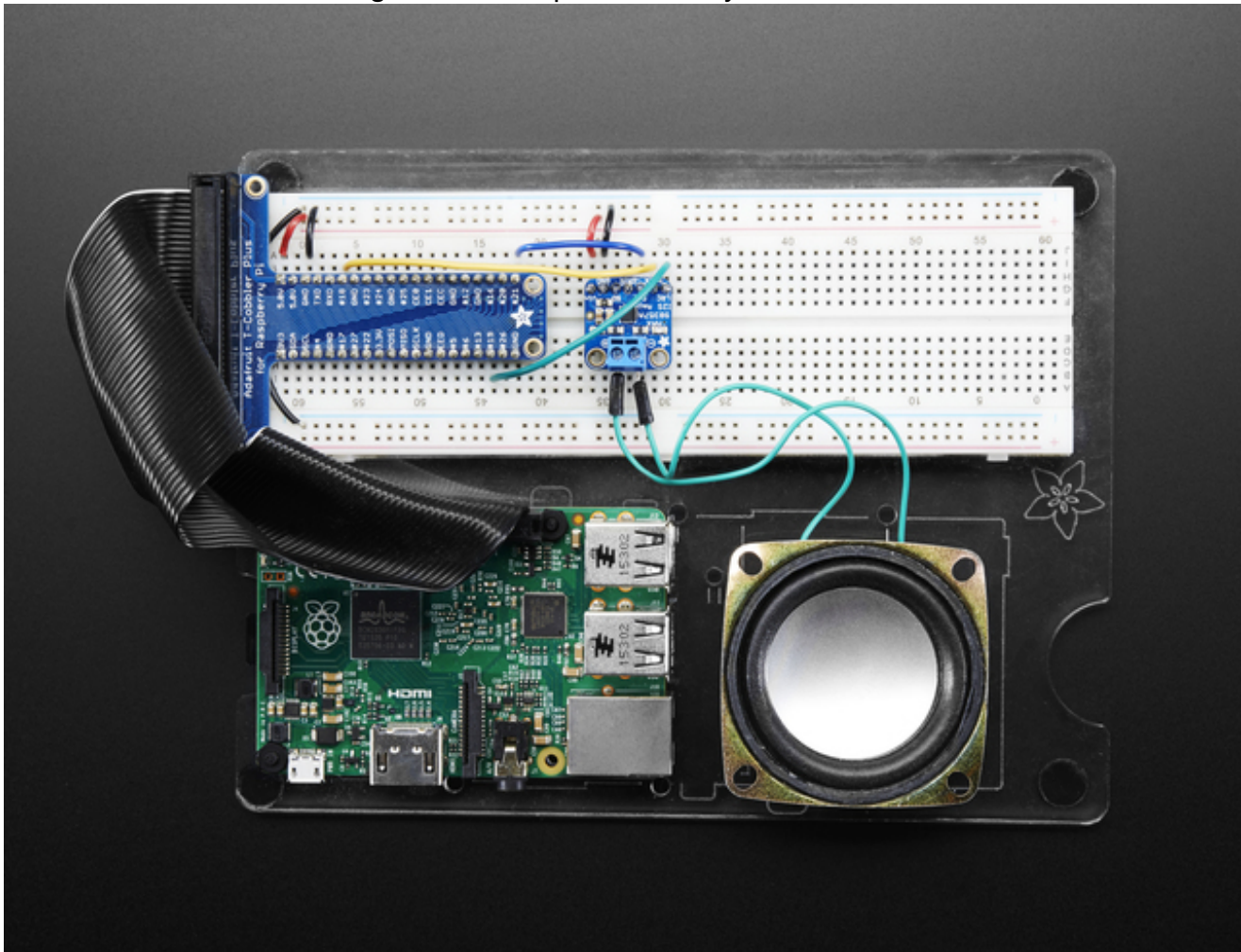


-

Raspberry Pi Wiring

if you have a Raspberry Pi and you want higher quality audio than the headphone jack can provide, I2S is a good option! You only use 3 pins, and since its a pure-digital output, there can be less noise and interference. Of course, you'll need to make sure that you have a nice strong 5V power supply so make sure to add 500mA or more to your power supply requirements!

This technique will work with any Raspberry Pi with the 2x20 connector. Older Pi 1's with a 2x13 connector do not bring out the I2S pins as easily



Connect:

- **Amp Vin** to Raspberry Pi **5V**
- **Amp GND** to Raspberry Pi **GND**
- **Amp DIN** to Raspberry Pi **#21**

- **Amp BCLK to Raspberry Pi #18**
- **Amp LRCLK to Raspberry Pi #19**



Raspberry Pi Setup

At this time, Jessie Raspberry Pi kernel does not support mono audio out of the I2S interface, you can only play stereo, so any mono audio files may need conversion to stereo!

Fast Install

Luckily its quite easy to install support for I2S DACs on Raspbian Jessie.

[These instructions are totally cribbed from the PhatDAC instructions at the lovely folks at Pimoroni! \(http://adafru.it/nFy\)](http://adafru.it/nFy)

Run the following from your Raspberry Pi with Internet connectivity:

```
curl -sS https://raw.githubusercontent.com/adafruit/Raspberry-Pi-Installer-Scripts/master/i2samp.sh | bash
```

```
pi@retropie: ~  
pi@retropie:~$ curl -sS https://raw.githubusercontent.com/adafruit/Raspberry-Pi-Installer-Scripts/master/i2samp.sh | bash  
  
This script will install everything needed to use  
i2s amplifier  
  
--- Warning ---  
  
Always be careful when running scripts and commands  
copied from the internet. Ensure they are from a  
trusted source.  
  
If you want to see what this script does before  
running it, you should run:  
  \curl -sS github.com/adafruit/Raspberry-Pi-Installer-Scripts/i2samp  
  
Do you wish to continue? [y/N] y  
  
Checking hardware requirements...  
  
Adding Device Tree Entry to /boot/config.txt  
dtoverlay already active  
  
Commenting out Blacklist entry in  
/etc/modprobe.d/raspi-blacklist.conf  
  
Default sound driver currently not loaded  
Configuring sound output  
  
We can now test your i2s amplifier  
Set your speakers at a low volume!  
Do you wish to test your system now? [y/N] █
```

You may need to reboot once. After rebooting, log back in and re-run the script!

You can then go to the next section on testing

Detailed Install

If, for some reason, you can't just run the script and you want to go through the install by hand - here's all the steps!

Update /etc/modprobe.d (if it exists)

Log into your Pi and get into a serial console (either via a console cable, the TV console, RXVT, or what have you)

Edit the raspi blacklist with

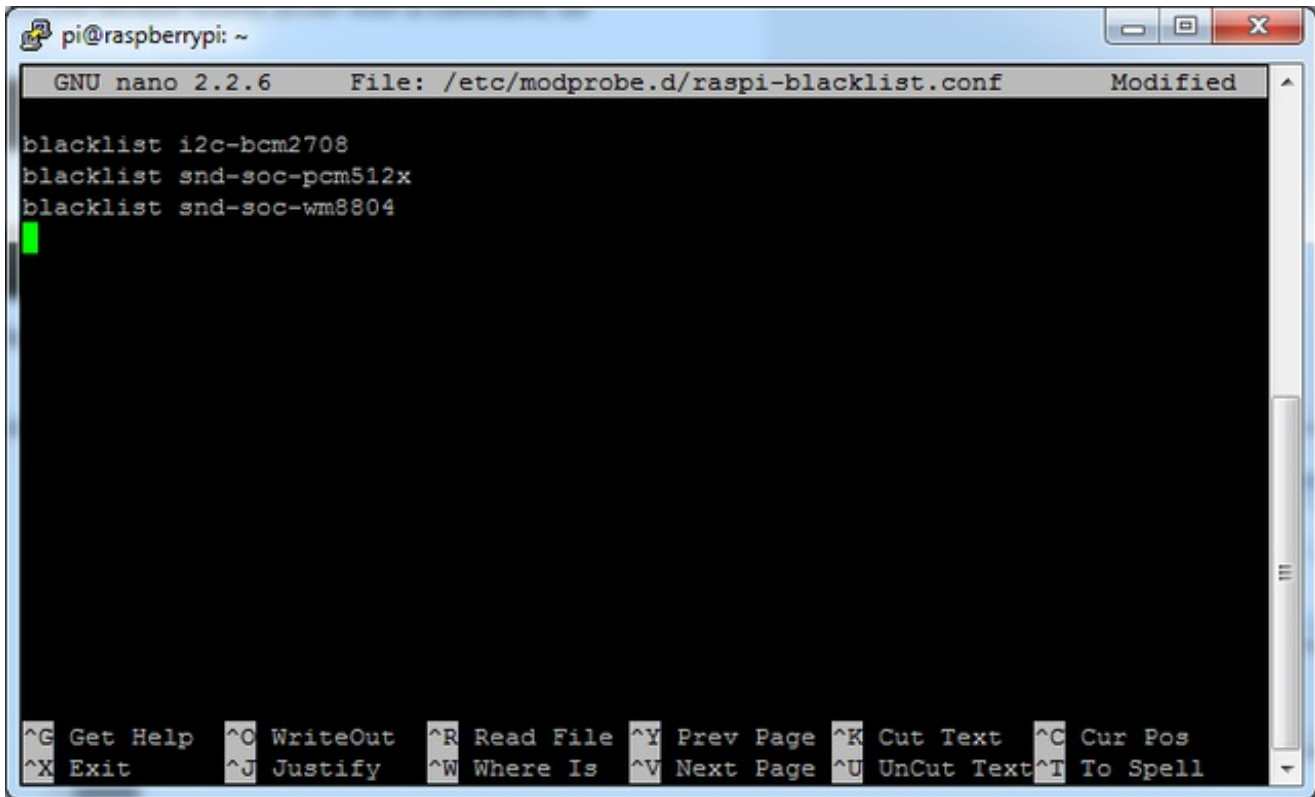
sudo nano /etc/modprobe.d/raspi-blacklist.conf



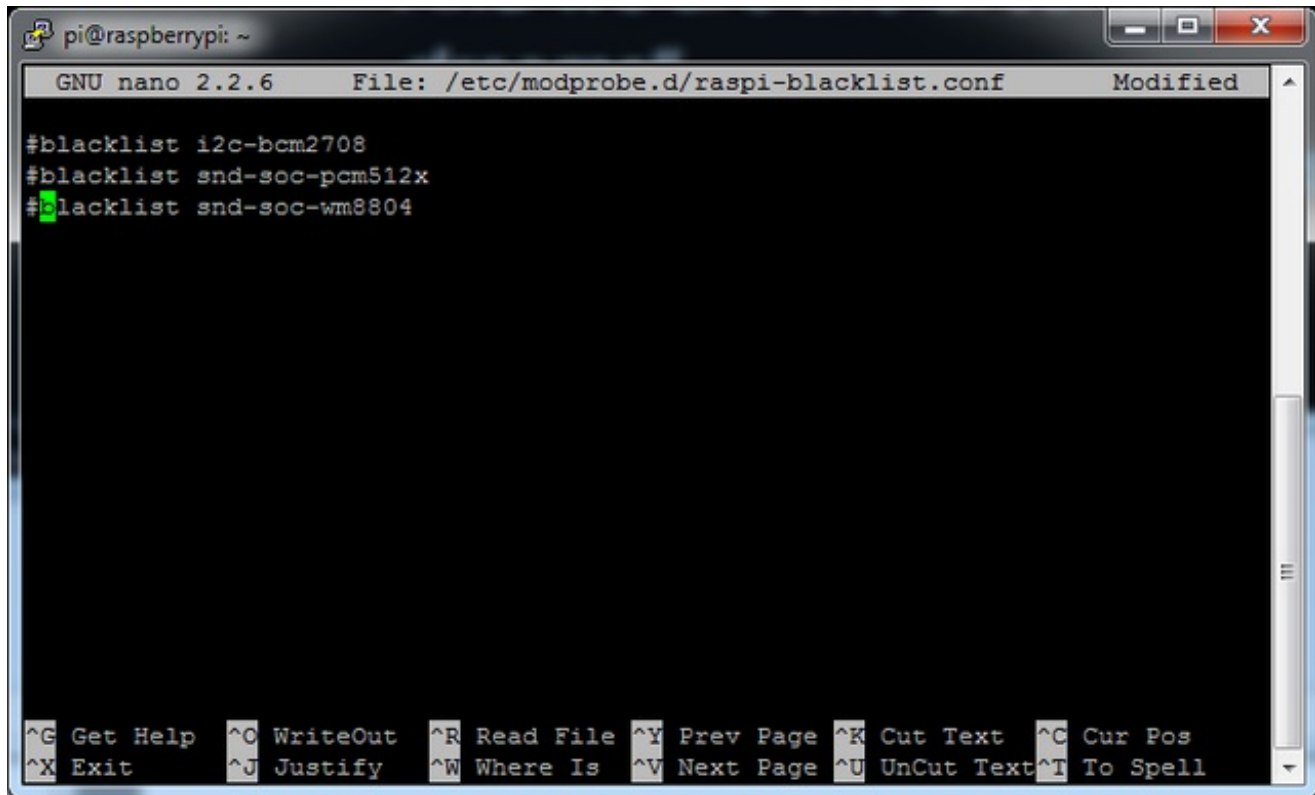
If the file is empty, just skip this step

However, if you see the following lines:

```
blacklist i2c-bcm2708
blacklist snd-soc-pcm512x
blacklist snd-soc-wm8804
```



Update the lines by putting a # before each line



```
pi@raspberrypi: ~
GNU nano 2.2.6 File: /etc/modprobe.d/raspi-blacklist.conf Modified
#blacklist i2c-bcm2708
#blacklist snd-soc-pcm512x
#blacklist snd-soc-wm8804

^G Get Help ^O WriteOut ^R Read File ^Y Prev Page ^K Cut Text ^C Cur Pos
^X Exit ^J Justify ^W Where Is ^V Next Page ^U UnCut Text ^T To Spell
```

Save by typing **Control-X Y <return>**

Disable headphone audio (if it's set)

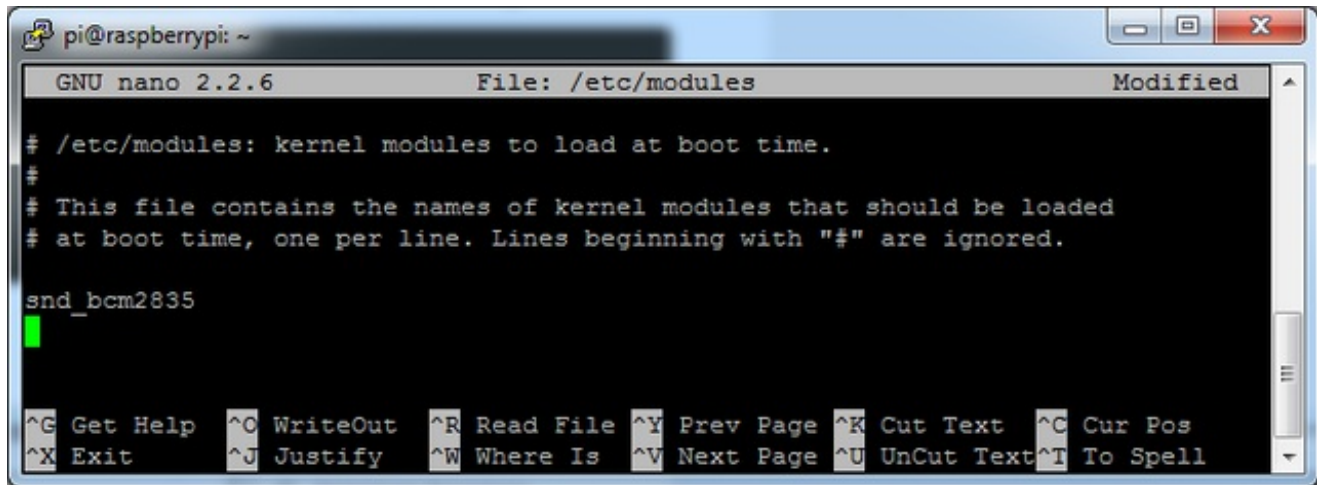
Edit the raspi modules list with

```
sudo nano /etc/modules
```

If the file is empty, just skip this step

However, if you see the following line:

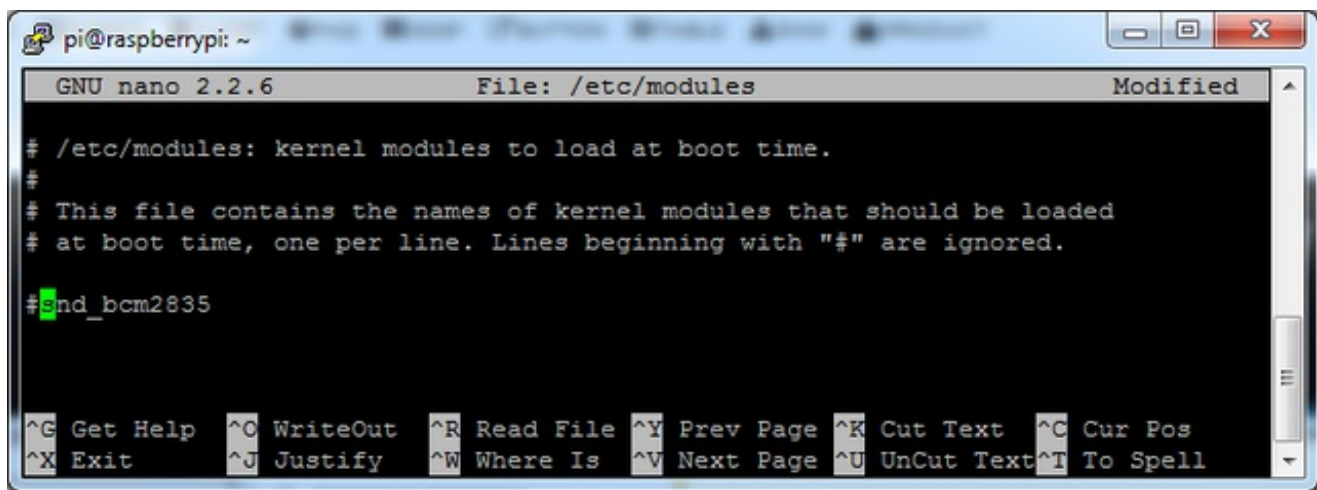
```
snd_bcm2835
```



```
pi@raspberrypi: ~
GNU nano 2.2.6 File: /etc/modules Modified
# /etc/modules: kernel modules to load at boot time.
#
# This file contains the names of kernel modules that should be loaded
# at boot time, one per line. Lines beginning with "#" are ignored.

snd_bcm2835
^G Get Help ^O WriteOut ^R Read File ^Y Prev Page ^K Cut Text ^C Cur Pos
^X Exit ^J Justify ^W Where Is ^V Next Page ^U UnCut Text ^T To Spell
```

Put a # in front of it



```
pi@raspberrypi: ~
GNU nano 2.2.6 File: /etc/modules Modified
# /etc/modules: kernel modules to load at boot time.
#
# This file contains the names of kernel modules that should be loaded
# at boot time, one per line. Lines beginning with "#" are ignored.

#snd_bcm2835
^G Get Help ^O WriteOut ^R Read File ^Y Prev Page ^K Cut Text ^C Cur Pos
^X Exit ^J Justify ^W Where Is ^V Next Page ^U UnCut Text ^T To Spell
```

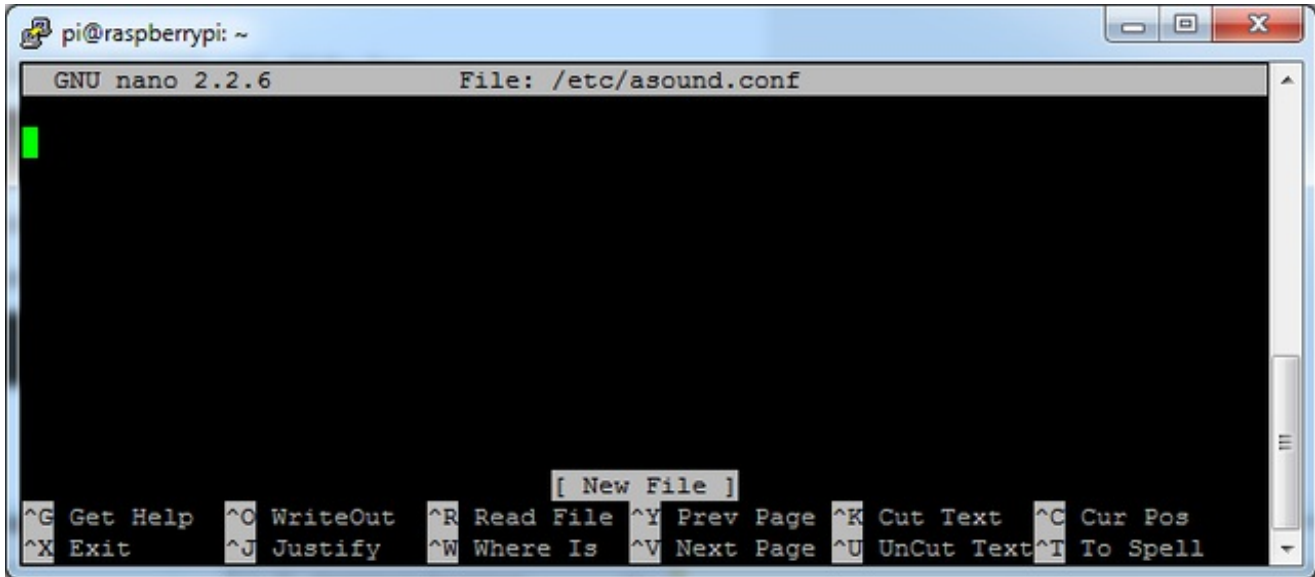
and save with **Control-X Y <return>**

Create asound.conf file

Edit the raspi modules list with

```
sudo nano /etc/asound.conf
```

This file ought to be blank!



Copy and paste the following text into the file

```
pcm.!default {  
  type hw card 0  
}  
ctl.!default {  
  type hw card 0  
}
```



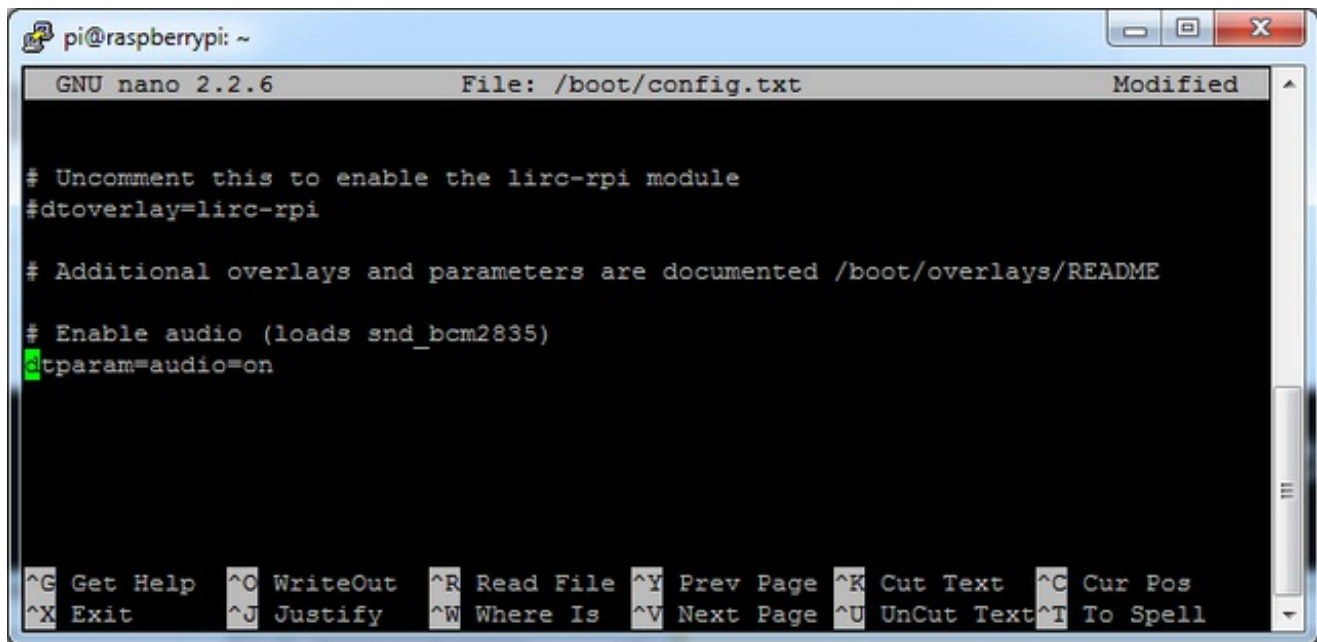
Save the file as usual

Add Device Tree Overlay

Edit your Pi configuration file with

sudo nano /boot/config.txt

And scroll down to the bottom. If you see a line that says `dtparam=audio=on`



```
pi@raspberrypi: ~
GNU nano 2.2.6 File: /boot/config.txt Modified
# Uncomment this to enable the lirc-rpi module
#dtoverlay=lirc-rpi

# Additional overlays and parameters are documented /boot/overlays/README

# Enable audio (loads snd_bcm2835)
dtparam=audio=on

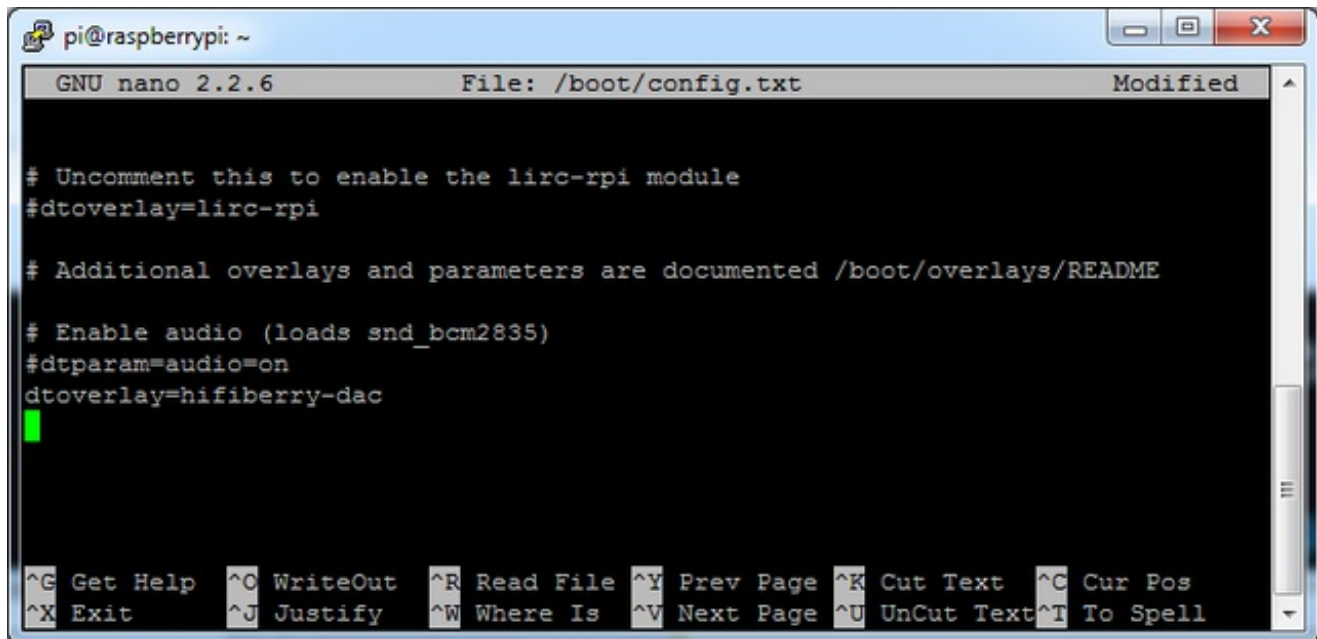
^G Get Help ^O WriteOut ^R Read File ^Y Prev Page ^K Cut Text ^C Cur Pos
^X Exit ^J Justify ^W Where Is ^V Next Page ^U UnCut Text ^T To Spell
```

Disable it by putting a `#` in front.

Then add:

```
dtoverlay=hifiberry-dac
```

on the next line. Save the file.



```
pi@raspberrypi: ~
GNU nano 2.2.6 File: /boot/config.txt Modified
# Uncomment this to enable the lirc-rpi module
#dtoverlay=lirc-rpi

# Additional overlays and parameters are documented /boot/overlays/README

# Enable audio (loads snd_bcm2835)
#dtparam=audio=on
dtoverlay=hifiberry-dac

^G Get Help ^O WriteOut ^R Read File ^Y Prev Page ^K Cut Text ^C Cur Pos
^X Exit ^J Justify ^W Where Is ^V Next Page ^U UnCut Text ^T To Spell
```

Reboot your Pi with **sudo reboot**



Raspberry Pi Test

Speaker Tests!

OK you can use whatever software you like to play audio but if you'd like to test the speaker output, here's some quick commands that will let you verify your amp and speaker are working as they should!

Simple white noise speaker test

Run `speaker-test -c2` to generate white noise out of the speaker, alternating left and right. Since the I2S amp merges left and right channels, you'll hear continuous white noise

Simple WAV speaker test

Once you've got something coming out, try to play an audio file with `speaker-test` (for WAV files, not MP3)

```
speaker-test -c2 --test=wav -w /usr/share/sounds/alsa/Front_Center.wav
```

Simple MP3 speaker test

If you want to play a stream of music, you can try

```
sudo apt-get install -y mpg123  
mpg123 http://ice1.somafm.com/u80s-128-mp3
```

[If you want to play MP3's on command, check out this tutorial which covers how to set that up \(http://adafru.it/aTD\)](http://adafru.it/aTD)

At this time, Jessie Raspberry Pi kernel **does not support mono audio** out of the I2S interface, **you can only play stereo**, so any mono audio files may need conversion to stereo!

Reducing popping

When the I2S amplifier gets a new frequency input it may 'pop' the speakers which can be

annoying.

The workaround is to use a software mixer to output a fixed sample rate to the MAX98357 so the bit clock does not change. I use ALSA so I configured **dmixer** and I no longer have any pops or clicks. Note that the RaspPi I2S driver does not support **dmixer** by default and you must [follow the instructions provided below \(http://adafru.it/sHF\)](http://adafru.it/sHF) to modify **/boot/config.txt** to add

```
dtoverlay=i2s-mmap
```

and change **/etc/asound.conf** to:

```
pcm.hifiberry {
type hw card 0
}

pcm.!default {
type plug
slave.pcm "dmixer"
}

pcm.dmixer {
type dmix
ipc_key 1024
slave {
pcm "hifiberry"
channels 2
}
}

ctl.dmixer {
type hw
card 0
}
```

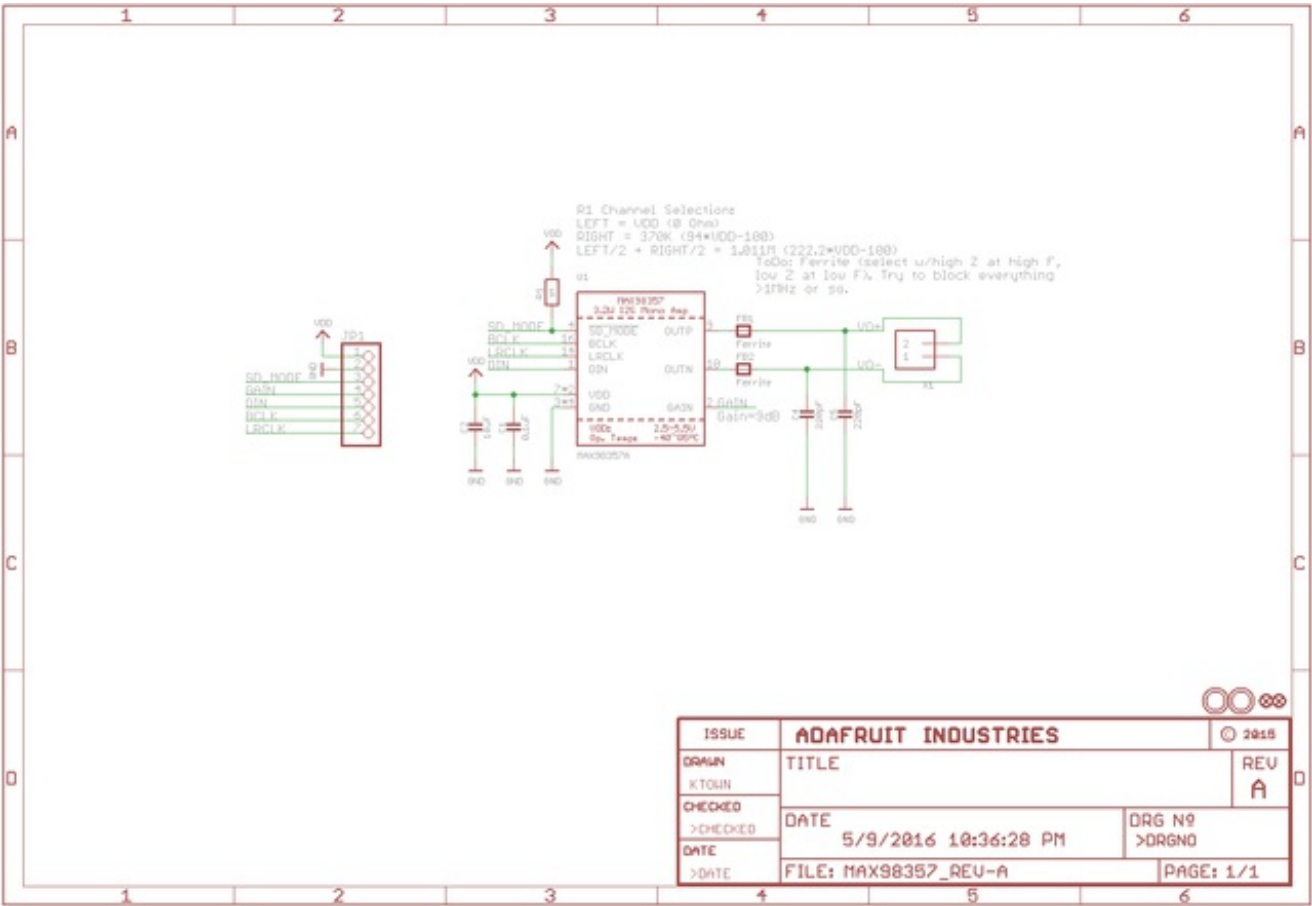


Downloads

- [MAX98357 Datasheet \(http://adafru.it/nFz\)](http://adafru.it/nFz)
- [GitHub with EagleCAD PCB Files \(http://adafru.it/nFB\)](http://adafru.it/nFB)
- [Fritzing object in the Adafruit Fritzing library \(http://adafru.it/aP3\)](http://adafru.it/aP3)

Schematic

Click to embiggen



Fabrication Print

Dimensions in Inches

